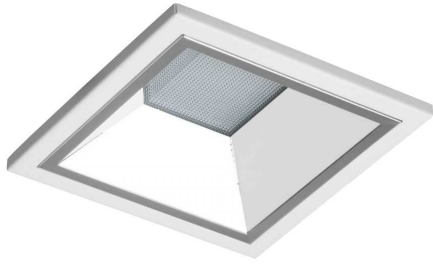


## CADINE



Recessed, square, fixed CCT white light LED downlight luminaire for plasterboard ceiling installations. Two size versions: S - 165mm x 165mm, beam angle 70° and M – 215mm x 215mm, beam angle 78°. Optics consists of large light emitting surface microprismatic diffuser and matt reflector. Net luminous output up to 2100 lm (S) / 2750lm (M), luminous efficiency up to 117 lm/W, Colour Rendering Index CRI (Ra) 80, Correlated Colour Temperature (CCT) 3000K or 4000K. Guaranteed colour stability 3 SDCM during entire service lifetime of 50 000 hours (L90 / L85, B10 at Ta=35°C). Independent thermally protected fixed or dimmable (1 – 100%, addressable DALI) driver with screw-less strain relief cable connections. Ambient operating temperature from -20°C to 35°C, weight 0.9kg (S) / 1.2kg (M), dimensions (L x H x W) 165 (215)mm x 165 (215)mm x 97 (109)mm. Energy Efficiency Class (EEC) A++/A+.