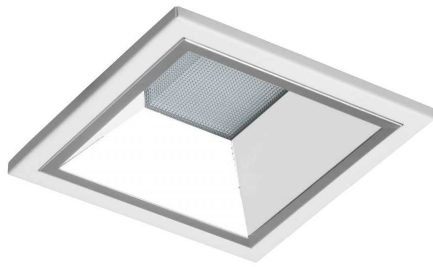


CADINE Pi-LED



Recessed, square, Pi-LED technology (light output adjustable from warm 2700K to cool 7000K CCT white light + limited RGB light from single luminaire) LED downlight luminaire for plasterboard ceiling installations. Three size versions: S - 165mm x 165mm, beam angle 75°; M – 215mm x 215mm, beam angle 82° and L – 265mm x 265mm, beam angle 80°. Optics consists of large light emitting surface microprismatic diffuser and matt reflector. Net luminous output up to 1000 lm (S) / 2050lm (M) / 2200lm (L), luminous efficiency up to 50 lm/W (S) / 60lm/W (M) / 64lm/W (L), Colour Rendering Index CRI (Ra) 90 at Correlated Colour Temperature (CCT) from 2700K or 7000K (white light). Service lifetime 50 000 hours (L70, B50 at Ta=35°C). DALI DT8 control required. Ambient operating temperature from 0°C (10°C) to 35°C, weight 1.4kg (S) / 1.6kg (M) / 2.0kg (L), dimensions (L x H x W) 165 / 215 / 265mm x 165 / 215 / 265mm x 97 / 109 / 127mm. Energy Efficiency Class (EEC) A.