



CITYOWL USER MANUAL

CONTENTS

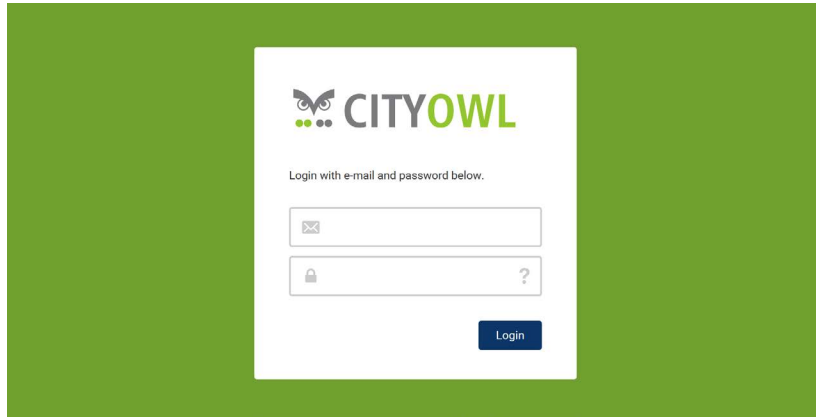
ACCESS TO SERVER	4
CONTROL PANEL	5
FEEDERS	6
System of feeders	6
Group formation	7
Change of view options	8
Overview	9
Measurements	10
Luminaires	11
Log	14
Settings	15
MAP	16
Adding feeders and lights on the map	17
PROFILES	18
Line profiles	18
Luminaire profiles	20
REGISTER	22
REPORTS	24
USERS	26

ACCESS TO SERVER

To access the server, type into your web browser the following address:

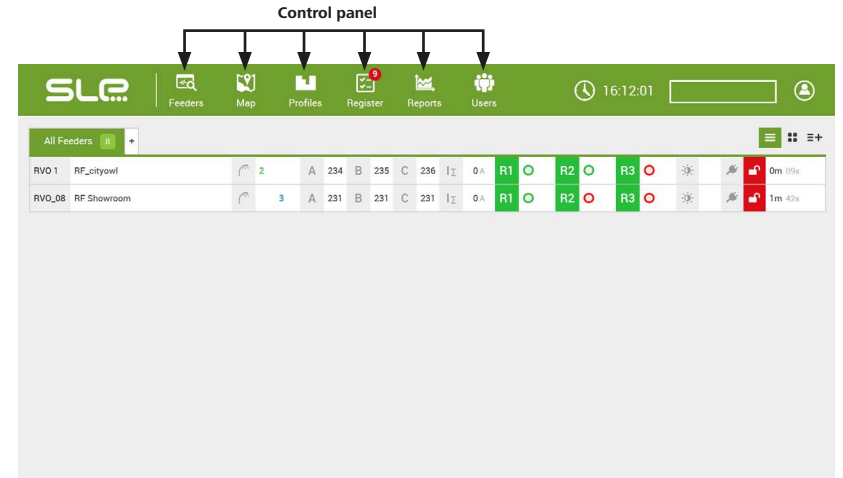
<http://cityowl.sleprojects.com/login>

Write your login name in the field with the envelope icon and your login password in the field with the lock icon.



CONTROL PANEL

Software control panel is divided into several subpages; each of them functions differently. If you run the software, a new window „Feeder” opens and shows information about all your feeders.



FEEDERS

All feeders

The software will show if the twilight sensor is connected, it will also give you information about the light level.

In the case of control unit power cut, this icon turns red.

ID Number

Name of the feeder (chosen by the user)

Number of lines (feeders) connected to each relay; if there are more of them, they will be marked with :

Information about the phase voltage

Number of luminaires per each feeder and their current status:
Green - Control unit in the luminaire is fully operational.
Red - Control unit in the luminaire is working but the lamp is damaged (e.g. power supply).
Blue - Control unit in the luminaire is not responding (or the luminaire is not connected, but it is added to the software).
Gray - Luminaire is added to the map but it does not have any ID number assigned.

If the feeder door is open, the icon of a closed lock changes to an open lock and the background turns red.

This field shows the last time the control unit sent data to the server.

Group formation

If your system consists of many feeders, you can divide them into groups.

To form a group, click on the symbol "+". You will see a pop-up window in which you can name the group and save it by clicking on "Save".

Once the group is formed, you can rename/delete it. To do so, move the cursor on the name of the group and click on the right mouse button.

If you want to assign a feeder to a group, move the cursor on the number of the feeder, press the left mouse button and drag it over to the selected group.

FEEDERS

Change of view options

In the top right corner there are **three** icons which can change the feeder view.

Standard view

Code	Name	C-Box	SIM card	Extension	Twilight sensor	Firmware	GSM coverage	Last data	Actions
RVO 1	RF_cityowl	2	A	234 B 235 C 236	IΣ	0 A	R1 ● R2 ● R3 ●	0m 09s	⚙️ 🗑️
RVO_08	RF Showroom	3	A	231 B 231 C 231	IΣ	0 A	R1 ● R2 ● R3 ●	1m 42s	⚙️ 🗑️

Basic information view

The second icon will give you a quick overview of several feeders.

Code	Name	C-Box	SIM card	Extension	Twilight sensor	Firmware	GSM coverage	Last data	Actions	
RVO_EU	R1	R2	R3	17h	R1	R2	R3	13d	⚙️ 🗑️	
RVO 2	R1	R2	R3	2m 19s	RVO_02	R1	R2	R3	63d	⚙️ 🗑️
RVO_05	R1	R2	R3	50d	RVO_08	R1	R2	R3	0m 36s	⚙️ 🗑️

Detailed report view

The third icon allows you to see the detailed report and the latest information about Firmware version, GSM coverage and this view also includes an option to delete the feeder from the system by clicking on **"Delete"**. Deletion needs to be confirmed by clicking on **"Yes"**.

Code	Name	C-Box	SIM card	Extension	Twilight sensor	Firmware	GSM coverage	Last data	Actions
RVO_EU	RF_cityowl	9802462	110054895883B			4294967295	99%	17h	Delete
	Test								Delete
	test 2								Delete
RVO 1	RF kufor	9669710	110124454984			4294967295	74%	13d	Delete
RVO 2	Kufor é:2	9669414	85.237.245.196			4294967295	74%	0m 19s	Delete
RVO_02	SLE electro cabinet	9669438				0	74%	63d	Delete
RVO_05	PLC Showroom	9669631	110124464728			6030	64%	50d	Delete
RVO_08	RF Showroom	9801779				4294967295	74%	3m 39s	Delete

Overview

If you want to access more specific information about a feeder, click on it.

Code	Name	C-Box	SIM card	Extension	Twilight sensor	Firmware	GSM coverage	Last data	Actions
RVO 1	RF_cityowl	2	A	234 B 235 C 236	IΣ	0 A	R1 ● R2 ● R3 ●	0m 09s	⚙️ 🗑️
RVO_08	RF Showroom	3	A	231 B 231 C 231	IΣ	0 A	R1 ● R2 ● R3 ●	1m 42s	⚙️ 🗑️

The first bookmark **"Overview"** includes information about current, voltage and power factor.

Feeder: RVO 01 Cierne nad Toplou - Park

Overview | Measurements | Register | Luminaires | Log | Settings

2m 18s

Phase	Current	Voltage	Cos φ
A	0.00 A	232 V	0.72
B	0.00 A	233 V	0.95
C	0.00 A	232 V	0.73

R1: 0.00 A, Bezny Astro rezim, OFF

R2: 0.00 A, Bezny Astro rezim, OFF

R3: 0.00 A, Bezny Astro rezim, OFF

Each relay has its **"Profile"** and the system also shows whether the state is **"on"** or **"off"**.

In the right part of the page, there is a map which shows the position of the selected feeder and the luminaires which fall within its management. It is possible to drag the map or use the scroll wheel to zoom the picture in or out.

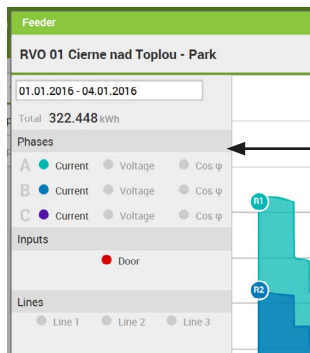
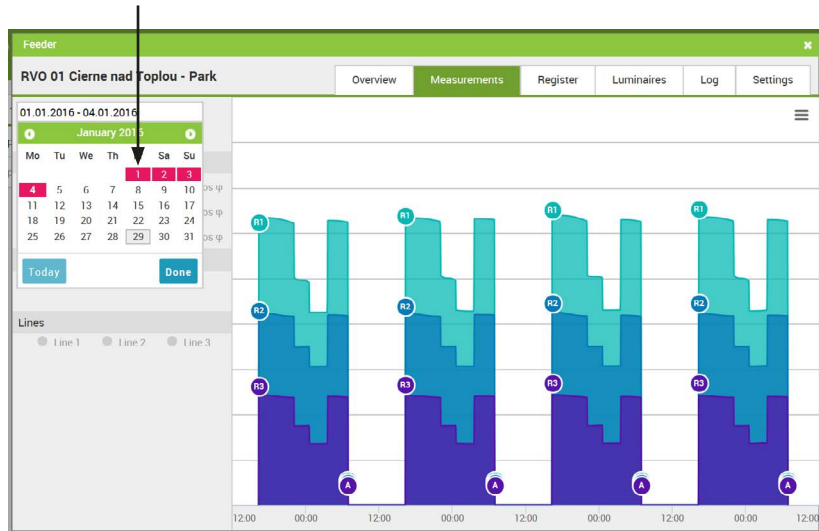
FEEDERS

Measurements

The bookmark **"Measurements"** gives you detailed information about the feeder measurements. It shows electricity consumption in the timespan you choose.

The measurements are shown in the graph below, which also shows information about the relay switching or opening of the feeder door.

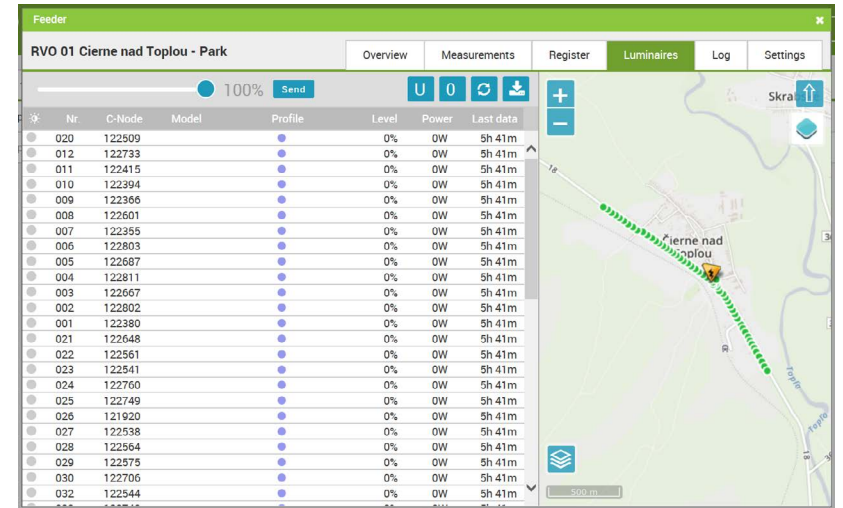
Choose the timespan by clicking on the starting date first and then choose the ending date.



In the left part of the page, there is an interactive graph legend. Choose which details you wish to view (Color differentiation).

Luminaires

The bookmark **"Luminaires"** shows information about each luminaire connected to the particular feeder and its position on the map.



- Serial number of the luminaire
- ID number of the luminaire (OWL Node)
- Type of the lamp
- Profile
- Dimming level
- Lamp performance
- The last time data report was sent
- Bullet - using motion sensor

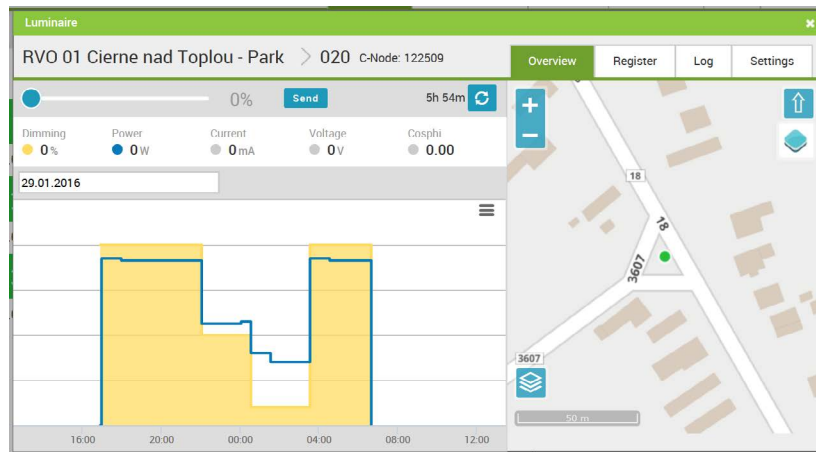
FEEDERS

Luminaires

If you go to the section Feeders/Luminaires and click on the specific luminaire or add a new one via the map, a new window will appear.

Overview

It shows description of the luminaire, light level (in %), power (W), current (mA), voltage (V) and power factor. There will also be a measurement diagram which can deduct the level of light and power of the luminaire.



Log

Log bookmark has the same function as „Log“ on the feeder subpage but the data from this subpage are valid only for the selected luminaire.

Time	user	Action	Details
24.11.2015 11:25:33	Marek Palkovic	luminaire_dimming	100%
24.11.2015 11:25:01	Marek Palkovic	luminaire_dimming	0%
23.11.2015 13:22:38	Marek Palkovic	luminaire_created	new, 48.991720, 21.570715, 9, 020, 122509, , + Add new profile, , ,

Settings

GPS coordinates - Check the coordinates of the luminaire (click on “Map” if you want to change it)

Feeder - Choose the feeder for the supply of a particular luminaire

OWL Node - View the ID number of the luminaire control unit

Model - Choose the type of the luminaire, edit the current data or choose another model

Add some extra information about the lamp-post like height and model (the entered data are just informative and will not affect the functioning of the software).

To manage the models, find the option “Manage models” from the list and there will be a new pop-up window with information about the models. If you want to edit any of them, choose it with a click.

If you want to create a new model, click on “Add new”.

FEEDERS

Luminaires

You should fill in the details about the type of the luminaire:

Name - name of the luminaire

Output - consumption of the luminaire

Failure - lower power output; there will be a signal that the luminaire is damaged

Warning! The default output value has to be lower than the lowest value when it's getting dark.

Color - Color of the model on the map

Notes - customizable description of the luminaire

Click on the default picture to upload your own picture of the luminaire.

Log

The bookmark Log shows information about changes made by the user (it does not show the changes which happen automatically).

Time	user	Action	Details
25.11.2015 14:30:47	Marek Palkovic	feeder_relay_switched_manual	R1 - ON
25.11.2015 13:20:53	Vladislav Dvoriak	feeder_dimming	10%
25.11.2015 13:20:24	Vladislav Dvoriak	feeder_relay_switched_manual	R1 - ON
25.11.2015 12:59:19	Vladislav Dvoriak	feeder_changed	9, 48,994375, 21,568190, RVO 01, Cierne nad Toplou - Park, 8802463, Orange, N, 1, 1, 1, N, Y, none, , , , #38ffff, 1, 50, , 2, 50, , 3, 50
25.11.2015 12:40:27	Marek Palkovic	feeder_relay_switched_manual	R1 - ON
25.11.2015 10:15:46	Marek Palkovic	feeder_relay_switched_manual	R1 - ON
25.11.2015 09:28:23	Marek Palkovic	feeder_dimming	100%
25.11.2015 09:28:12	Marek Palkovic	feeder_dimming	10%
25.11.2015 09:27:31	Marek Palkovic	feeder_relay_switched_manual	R1 - ON

Settings

Settings allow you to add or change the settings of the feeder control panel.

Nr	R1	R2	R3	Transf.	Min	Label
A	<input checked="" type="checkbox"/>	<input type="checkbox"/>	<input type="checkbox"/>	50A	A	
B	<input type="checkbox"/>	<input checked="" type="checkbox"/>	<input type="checkbox"/>	50A	A	
C	<input type="checkbox"/>	<input type="checkbox"/>	<input checked="" type="checkbox"/>	50A	A	

GPS Coordinates:

They will be added automatically after you add a new feeder (as explained in the chapter "Profiles").

Always on - line is under voltage regardless the line profile. Only the profiles of luminaires are in operation.

Color:

Color demonstration of the position of the feeder on the map.

Feeder Nr.:

It indicates the serial number of the feeder. Name of the Feeder: It indicates the name of the feeder.

Connected Phases:

It shows which phases are connected (A, B, C).

Twilight Sensor:

It shows the status of sensor connection.

Phases:

It is necessary to define the real status of the connection of the phases to the relay and set the value of the current transformer. In the field "Min A" you can enter the minimum ampere value and if the value falls below the value, the system will automatically send a warning SMS. In the field "Label" you can enter the name of the respective outgoing section. Make sure you save all the changes.

C-Box ID:

The number is stated on the feeder control panel.

Door Sensor:

It shows whether the door of the feeder is open or not.

Type:

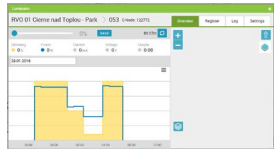
There are two feed operation modes. Profiles - it shows that the line supply is in accordance with the default settings (off/on).

Extension:

If you need to measure more than 3 lines, you can use the extension module 12, 24 and 36.

MAP

The page "Map" shows location of all devices - feeders and luminaires.



On the map, you can click on the feeder or the luminaire to see "Overview" of the chosen unit.

Nr	C-Node	Feeder	Model	Profile	Status	Power
020	122509	RVO 01 Ciernie nad Toplou - Park		test	0%	0W
012	122733	RVO 01 Ciernie nad Toplou - Park		test	0%	0W
011	122415	RVO 01 Ciernie nad Toplou - Park		test	0%	0W
010	122394	RVO 01 Ciernie nad Toplou - Park		test	0%	0W
009	122366	RVO 01 Ciernie nad Toplou - Park		test	0%	0W

The panel under the map can be used for easier access to the luminaires. Using the **Shift** key, you can choose several luminaires at the same time and assign them individual profiles. Mark the columns if you want to change the Color view on the map according to different categories like feeder, model, profile, etc. **Different Colors of the**

luminaire status on the map have different meanings:
Green - Control unit communicates with the luminaire but the luminaire is switched off.
Red - Control unit communicates with the luminaire but the luminaire reports an error.
Blue - Control unit does not communicate with the

luminaire (it is not connected but it is added to the system).
Gray - Luminaires are added to the map but they are not connected to the control unit of the luminaire (or ID number is missing).
Yellow - Luminaires are switched on.
Orange - Luminaires are switched on but they remain dark.

Adding feeders and lights on the map

You can manage the dots on the map by **icons** on the left.

Nr	C-Node	Feeder	Model	Profile	Status	Power
020	122509	RVO 01 Ciernie nad Toplou - Park		test	0%	0W
012	122733	RVO 01 Ciernie nad Toplou - Park		test	0%	0W
011	122415	RVO 01 Ciernie nad Toplou - Park		test	0%	0W
010	122394	RVO 01 Ciernie nad Toplou - Park		test	0%	0W
009	122366	RVO 01 Ciernie nad Toplou - Park		test	0%	0W

- ← Zoom in the map (you can also use the scroll wheel)
- ← Zoom out the map (you can also use the scroll wheel)
- ← Move the view (you can also use your mouse)
- ← Add a luminaire
- ← Add a feeder
- ← Move a luminaire / a feeder
- ← Switch the map view (basic/aerial view)

1. You can activate the mode of adding a new device by clicking on the icon "Add a luminaire" or "Add a feeder".
2. Add the selected device by double-click.
3. There will be a new window with information about the device (find out more in the sections dedicated to Feeders and Luminaires).
4. After you fill in all the necessary information, press "Save".

PROFILES

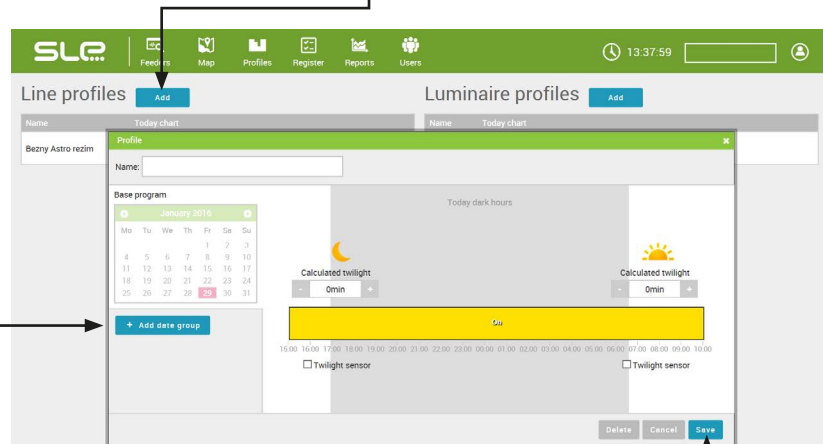
Line profiles

This option can manage profiles for all lines or each relay. It will allow you to set the working mode of feeders (off/on) and luminaires (level of light intensity).

Based on GPS coordinates, this software can calculate the sunrise and sunset automatically. The time is shown in gray space close to the timeline.

CREATING PROFILES

1. To add a new line profile, click on **"Add"** to open a new window.



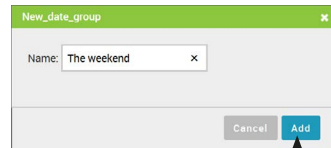
2. In the field **"Name"** add the name of your profile and click **"Save"**

After you successfully create the basic profile, it can be managed by the system of sunrise and sunset. If you want to change this setting, adjust the time by using +/- to add or subtract minutes as needed.

If you are using a Twilight sensor, you can set it on **off/on**, depending on the level of light; it is useful mainly in special weather conditions, for example if it's dusty or foggy.

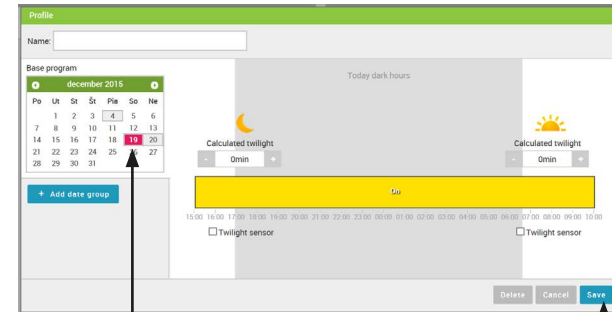
MAKING AN EXCEPTION

In the profile setting, it is possible to make exceptions, i.e. create a special profile for a selected number of days (for example during the weekends or on the New Year).



1. Click on **"+ Add date group"**.
2. A new window will appear. Enter the name of the exception and confirm by clicking on **"Add"**.

3. The change will be shown in the calendar.



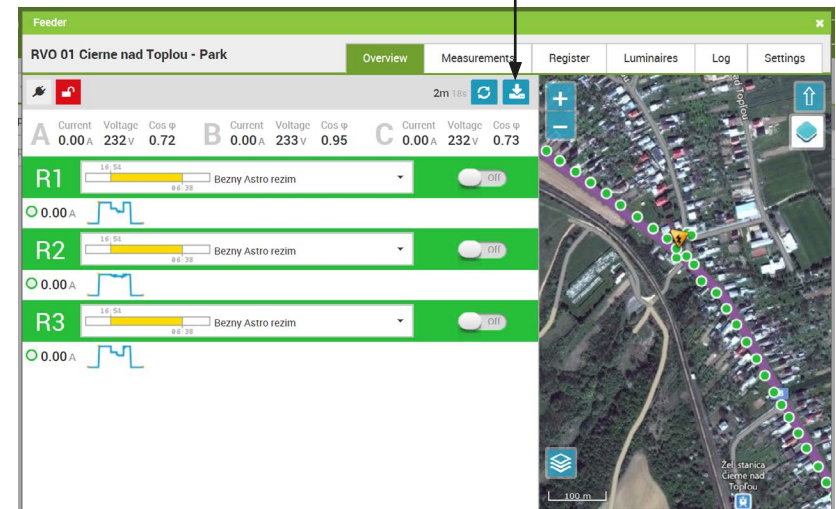
In the calendar, you can select days (by clicking on dates) which will make part of the exception.

By clicking on **"Save"** you will save the changes made in exceptions. You can come back and change the selected days if necessary.

PROFILE ACTIVATION

If you want to use the profile, you have to assign it to a line.

1. Choose the feeder in the panel **"Feeders"** and assign it to a particular line.
2. Activate the profile by clicking on **"Set profile"**.



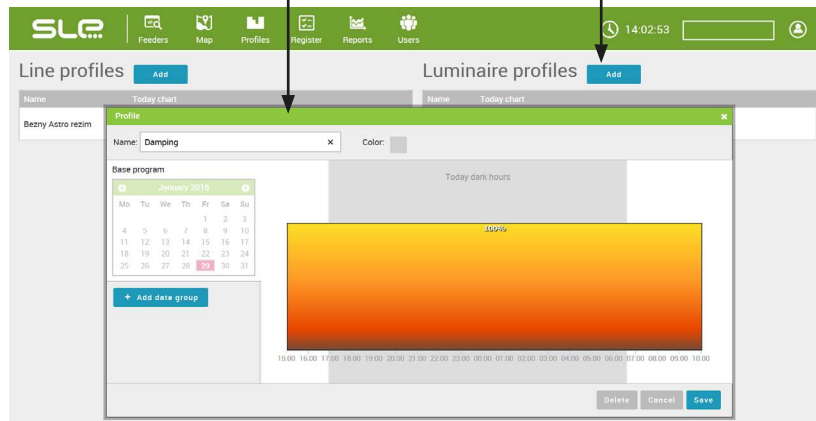
PROFILES

Luminaire profiles

Manage profiles for individual luminaires. It allows you to adjust the setting of the light intensity according to time.

CREATING PROFILES

1. If you want to add a new luminaire profile, click on **"Add"**.
2. There will be a new window similar to the one you opened in **"Line Profiles"**.



3. You can change the light level and times of the changes.
4. If you want to add a new change of the level, double-click on the Colored part.



5. The level boundaries can be adjusted, just click on the specific time of the change or drag it as necessary.

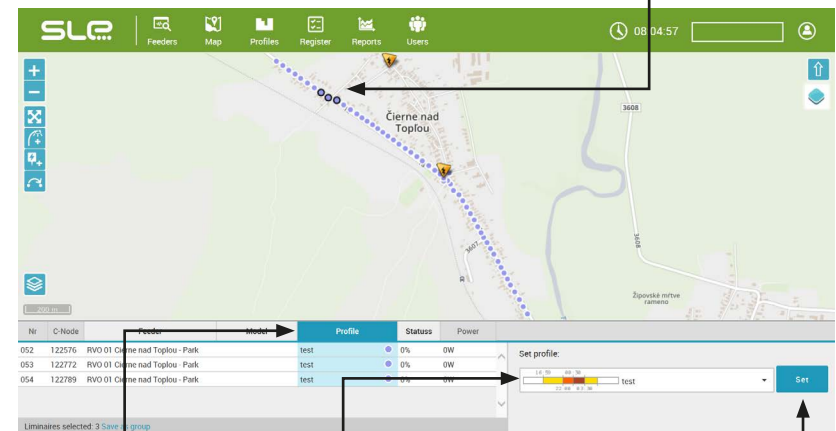
6. Click on the upper boundary and drag it if you want to change the level of light intensity (in %).



7. You can add exceptions as needed like you did in **"Line Profiles"**.
8. Click on **"Save"**.

PROFILE ACTIVATION

1. In the panel **"Map"**, press **"shift"** on your keyboard and **select the luminaires** subjected to the activation.

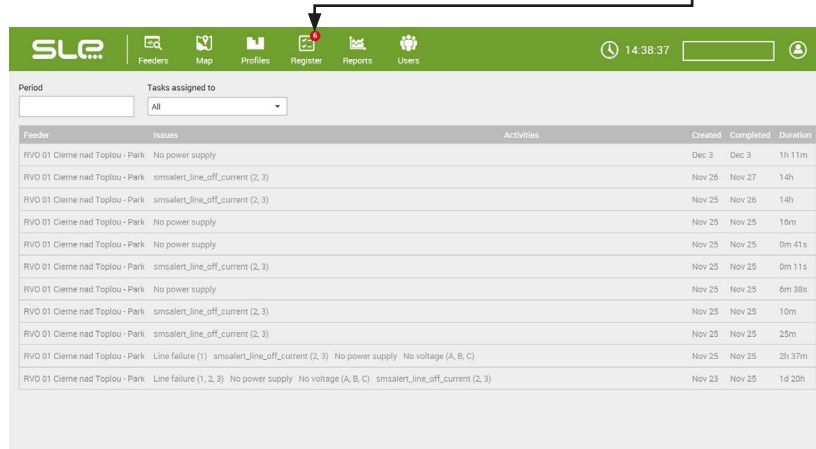


2. Press **"Profil"**, select the correct **profile** and press **"Set"**.

REGISTER

On the page **“Register”**, you will see all failures, errors and repairs made by the maintenance team.

1. If there are any problems with a feeder, there will be a notification in the **“Register”** folder on the top navigation bar (you will see the number of problems above the icon).



2. If you click on the icon, you will see a list of all resolved (inactive) and unresolved (pending) problems.

You might encounter three kinds of problems:

1. Relay power cut

You can view the phase with the problem.

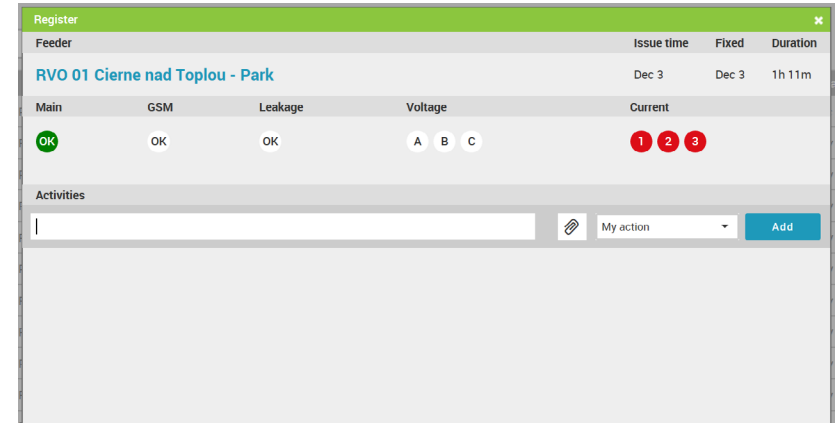
2. Line failure

If the amperage falls below the minimum level - Min. value in amperes (see the Chapter Feeders to find and set the minimum value), you will see the phase with the problem.

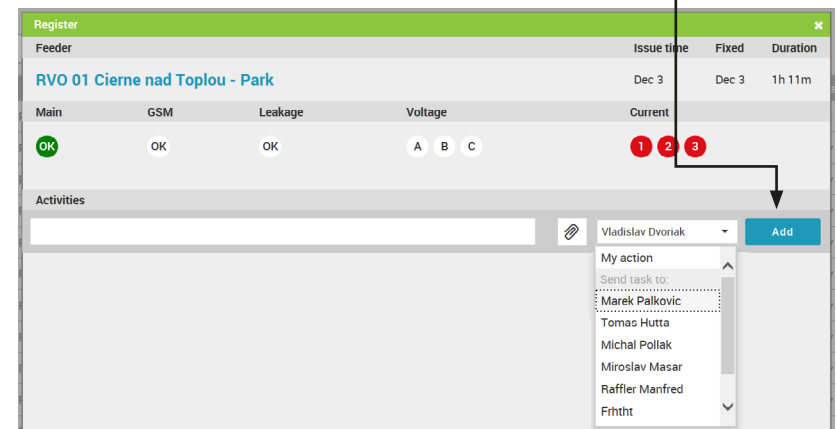
3. Loss of communication

If you lose communication between the control panel OWL-Node and software, you will be notified.

3. After you click on one of the notification lines, you will see a new window with more details. All errors are marked with red.



4. The admin can send the notification to the maintenance team with description of the problem and assign the problem to a specific user. After you click on **“Add”**, the involved people will receive an email notification.

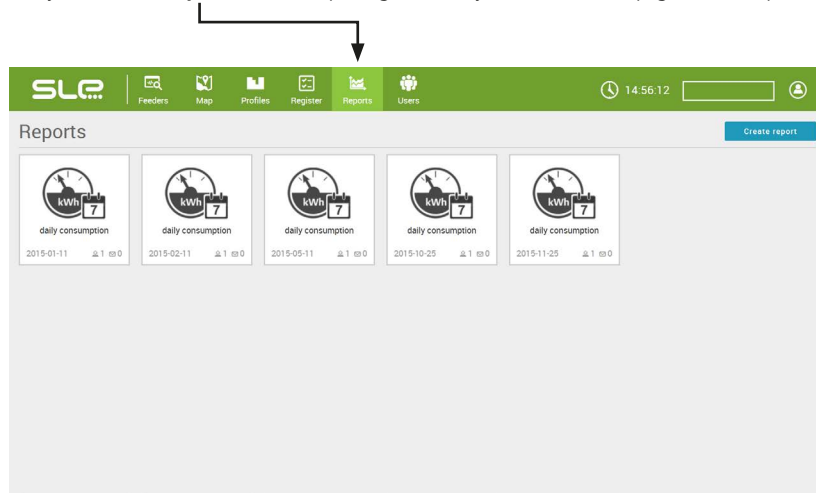


5. After you send the email notification, the system will make a note in the new line of error notifications.

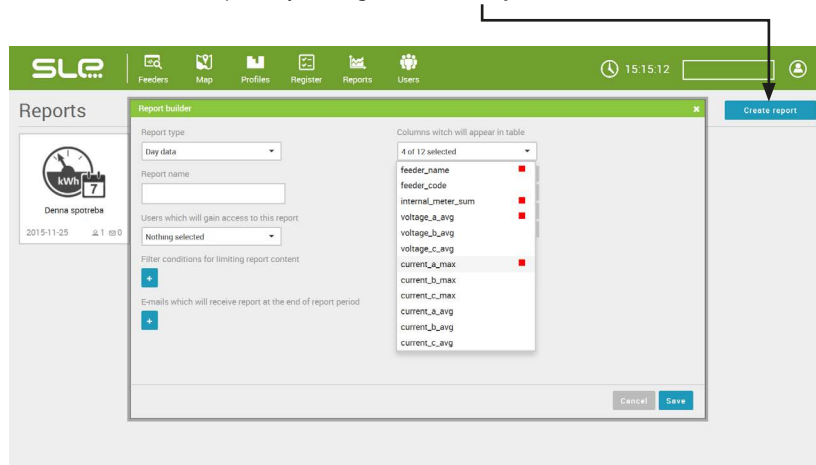
If the problem is resolved (all red notifications are gone), you can tick it and the status of the problem will change to solved. The system monitors the exact time of when the problem arose and when it was solved.

REPORTS

1. If you click on **"Reports"** on the top navigation bar, you will see a new page with all reports.



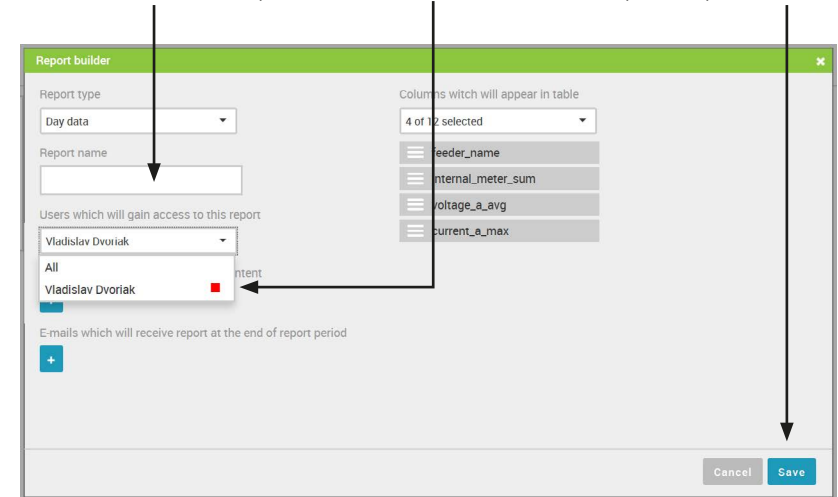
2. You can make new reports by clicking on **"Create report"**.



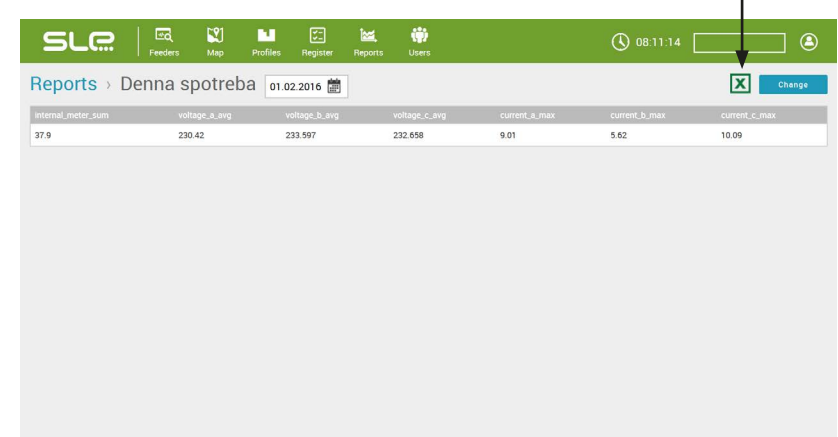
3. There will be a new window in which you can customize the reports, i.e. select the right time-span of the report (e.g. daily, monthly), data you want to see in the report (overall energy consumption, phase tension, numbers of feeders, etc.).

4. Selected data will appear on the list marked with a red square on the right side of the pull-down menu.

5. Enter the **name** of the report, choose the **users** who can see the report and press **"Save"**.

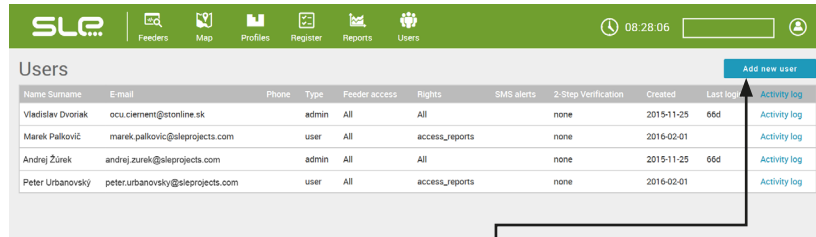


6. You can also download the report in a form of Excel sheet. After you click on the icon of the programme, it will download automatically to your computer.

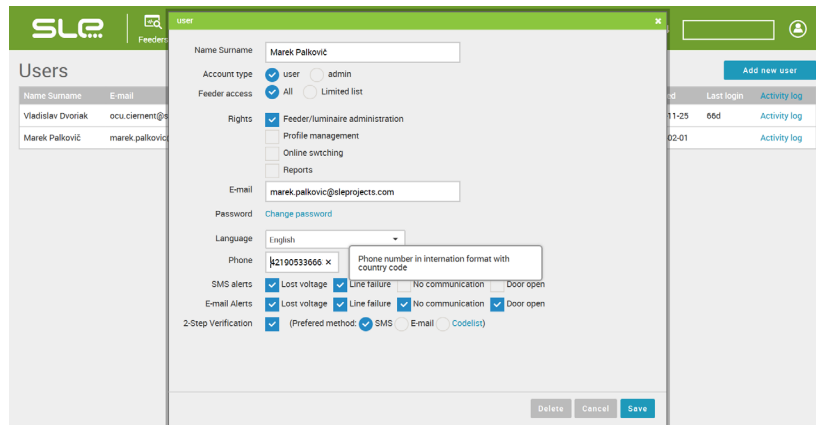


USERS

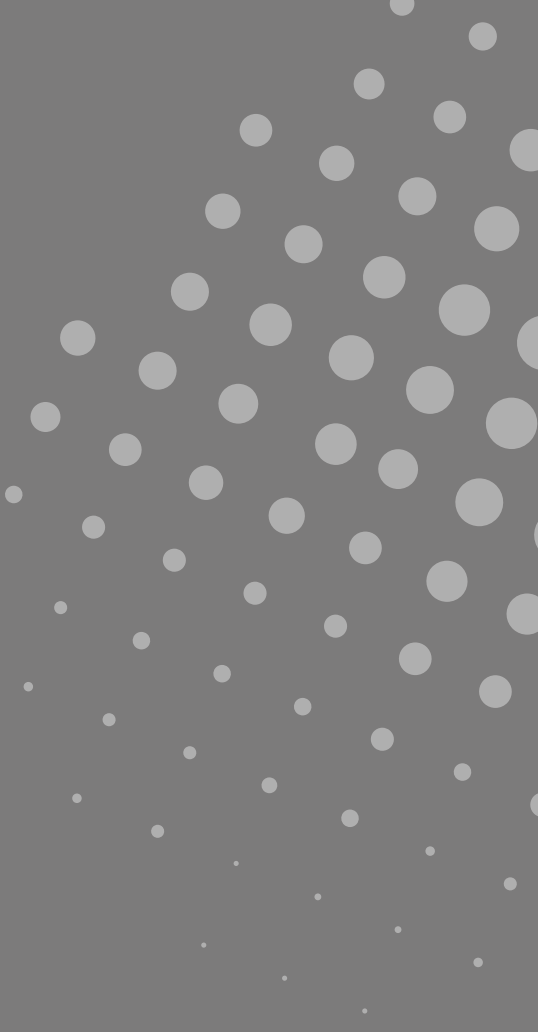
1. If you click on **"Users"**, you will see a new page with a list of all users, their access rights, their last log-in and also whether they use a two-step verification or not. You can also see their activity history – manual system management (relay feeder, twilight sensor, etc.)



2. The new user can be added by clicking on **"Add a new user"**.
3. There will be a new window with settings.



- Add the name and the surname of the user.
- Choose one of two access rights in the field Account type; **"Admin"** has all access rights and **"User"** has limited rights which you can manually assign to him by ticking the appropriate boxes.
- It is necessary to enter the email address of the user as he/she will receive the login details to the system via email.
- Choose the language of the user.
- You can also include the phone number of the new user in the format 421 905 999 999 **(without the "+" sign and without "00" at the beginning)**. The phone number will be used in case the system sends an SMS alert.
- Select situations in which SMS alerts will be sent to the phone number.
- If you want to set **"two-step verification"**, tick the box and choose the ways of verification (SMS, email, list of codelist).



SLE
Dojč 419
906 02 Dojč
Slovakia
+421 34 694 0847
office@sleprojects.com
www.sleprojects.com