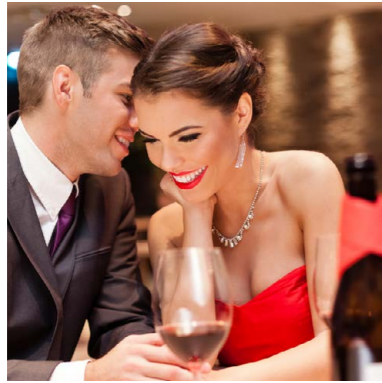


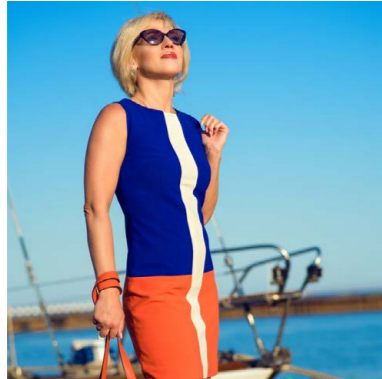
EVENING



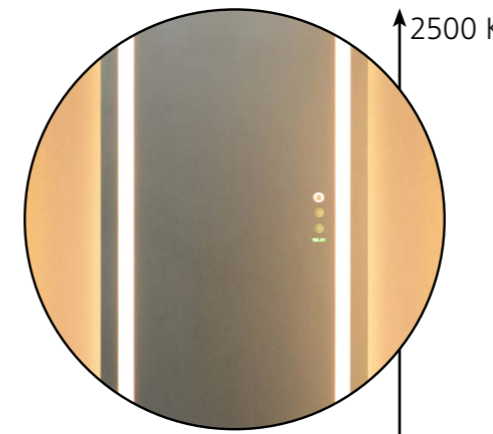
OFFICE



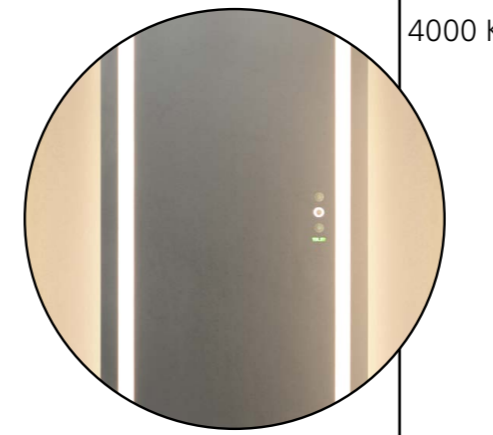
DAYLIGHT



Motion sensor



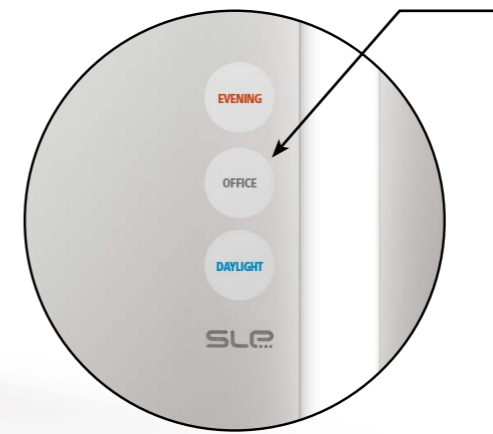
2500 K



4000 K



6500 K



LIGHTING SOLUTION FOR FITTING ROOMS

Natural colour

In a fitting room all body shapes look their best with softly diffusing light. To achieve this effect, high colour rendition linear light sources are mounted down the length of both sides of the front and back part of the mirror, showing natural skin tones and softening facial features. The mirror lighting utilises the latest Pi-LED technology.

Dynamic lighting

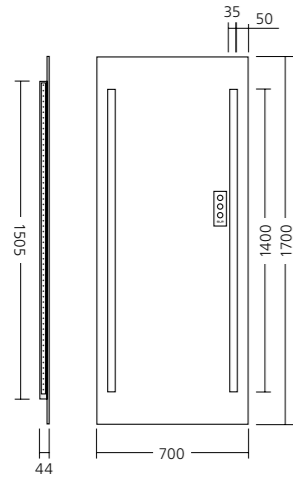
With Smart Mirror the lighting can be easily adjusted to simulate the environment where the product will be used. Soft, warm light is perfect for an evening dress, while cold white light is ideal for outdoor wear.

Control system

Smart mirror lighting can be controlled via an intuitive control panel. In addition, as fitting rooms have huge energy saving potential, a built-in movement sensor turns the light on when a customer enters, and switches it automatically off after no motion is detected for a defined period of time.

FITTING ROOM

DIMENSION



MOUNTING



- 5 years warranty
- PI-LED™
- up to 7500 lm
- up to 73 lm/W
- 90+ Ra



Mounting	Wall mounted
Optical system	Opal diffuser
Light distribution	Direct - indirect
Driver	Electronic control gear FIX
Materials	Housing: stainless steel Diffuser: sanded glass
Surface finish	Installation plate: White
Ambient temperature	Up to +30 °C
EEC	A++ / A+ / A

SMART MIRROR

To make sure customers look their best when trying products, it is best to use softly diffusing, high colour rendition linear light sources mounted down the length of both sides of the mirror. Such lighting minimises the occurrence of harsh and unrealistic shadows, renders colours and skin tone naturally, flatters facial features and softens all body shapes.

Type	net lumen output (at Ta = 25 °C)	power consumption	color rendering index	correlated color temperature	optic	weight
	(lm)	(W)	CRI (Ra)	CCT (K)		kg
SMART MIRROR	7500	102	90	2700 - 4000 - 6500	180°	20

Luminous flux tolerance +/- 10%. The Company reserves the right to change any product specifications without prior notification.

STANDARD

