

GALE FOOD



Passive cooler with HeatPipe

is a powerful combination which has a high heat transfer efficiency and provides for perfect cooling.

Quick and effortless Installation

is ensured by push-in connectors and integrated strain-relief, which is placed in the closing cover of the driver.

Thermally protected driver

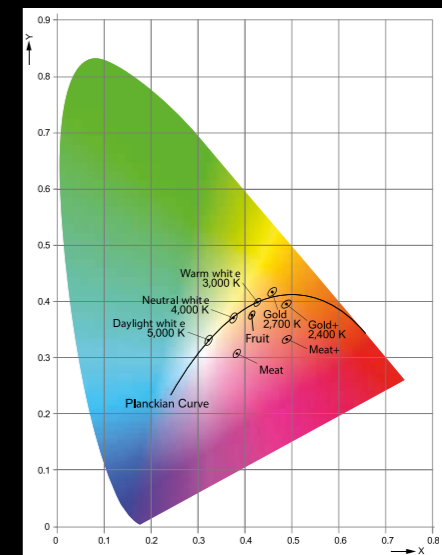
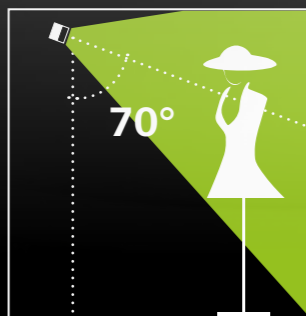
reacts to overheating first by regulating its output and if the overheating lasts, it turns off automatically, so that there is no damage caused to the driver.

Cover glass

protects the LED and optical system against unnecessary damage caused by dust or contact with the outside environment.

Adjustable mechanism

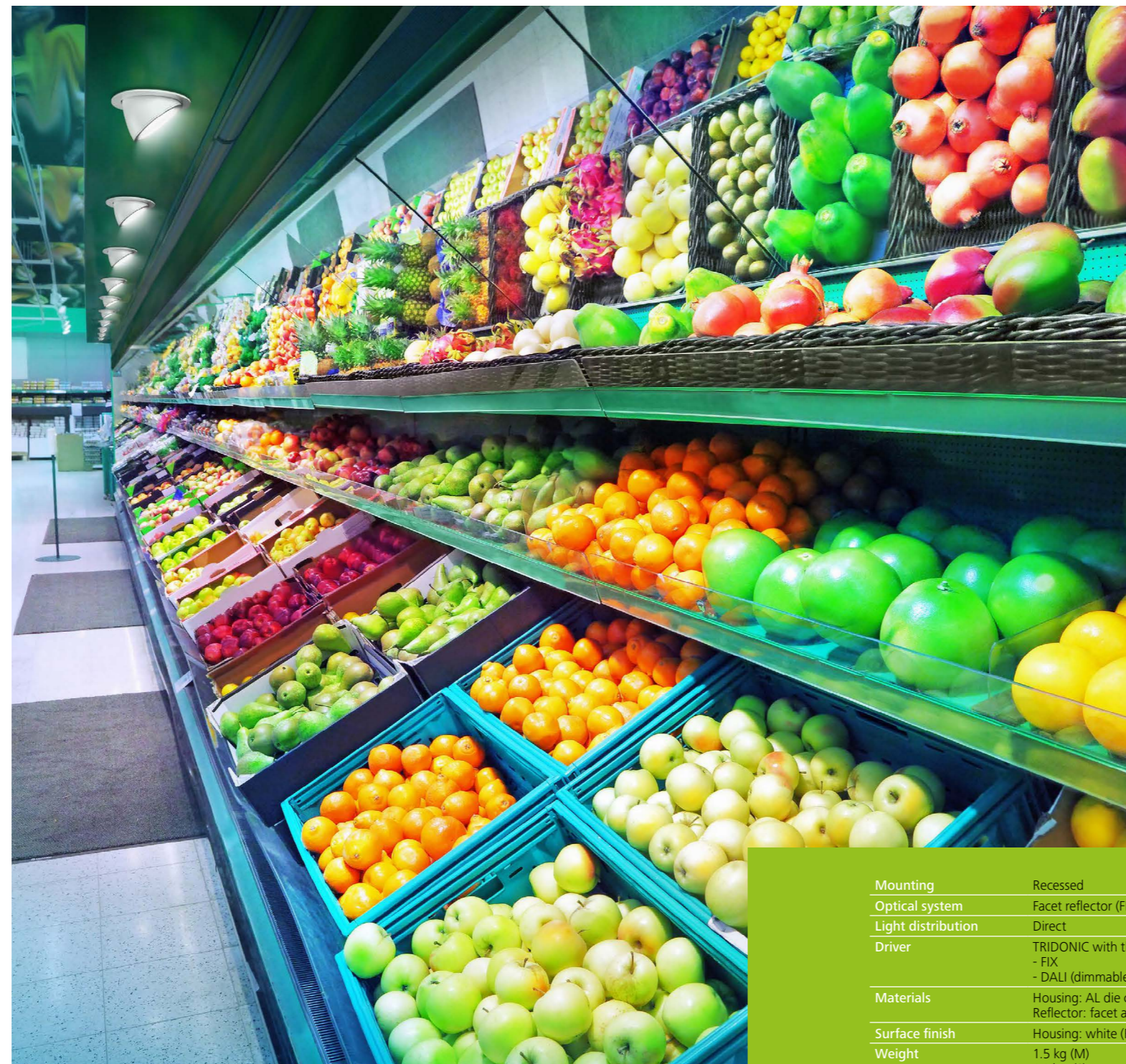
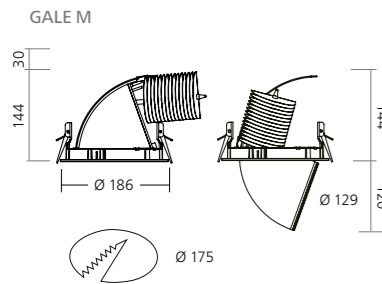
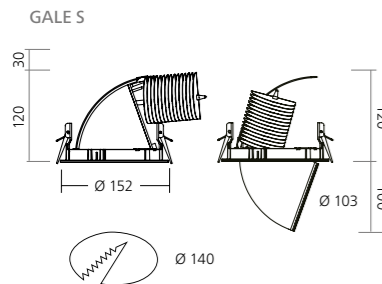
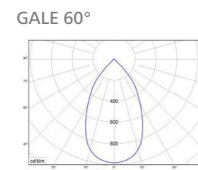
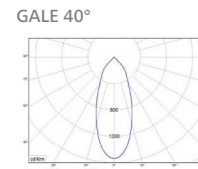
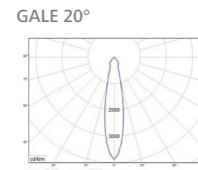
is unique for its movable function; according to the need of light distribution, it allows for enhanced illumination of the area from close distance and focus on objects.



Color stability

is provided by a chip with **3-4 SDCM**, which means there is no chance to spot any possible change in quality of the light colour with the human eye.

RETAIL



- 5 years warranty
- LED
- up to 2500 lm
- up to 73 lm/W



Type	mounting type	modul	net lumen output (at Ta = 25 °C)	power consumption	correlated color temperature	optic	control	color
			(lm)	(W)	CCT (K)			
GALE S	RE	TRIDONIC	2100 / 2100 / 2000	29	GOLD	FR 20°/40° / 60°	FIX / DALI	WHITE
GALE S	RE	TRIDONIC	1500 / 1500 / 1400	29	GOLD+	FR 20°/40° / 60°	FIX / DALI	WHITE
GALE S	RE	TRIDONIC	1300 / 1300 / 1200	29	MEAT	FR 20°/40° / 60°	FIX / DALI	WHITE
GALE S	RE	TRIDONIC	1450 / 1450 / 1350	29	MEAT+	FR 20°/40° / 60°	FIX / DALI	WHITE
GALE S	RE	TRIDONIC	2250 / 2250 / 2150	29	FISH	FR 20°/40° / 60°	FIX / DALI	WHITE
GALE S	RE	TRIDONIC	2000 / 2000 / 1900	29	FRUIT	FR 20°/40° / 60°	FIX / DALI	WHITE
GALE M	RE	TRIDONIC	2450 / 2450 / 2450	34	GOLD	FR 20°/40° / 60°	FIX / DALI	WHITE
GALE M	RE	TRIDONIC	1650 / 1650 / 1650	34	GOLD+	FR 20°/40° / 60°	FIX / DALI	WHITE
GALE M	RE	TRIDONIC	1550 / 1550 / 1550	34	MEAT	FR 20°/40° / 60°	FIX / DALI	WHITE
GALE M	RE	TRIDONIC	1600 / 1600 / 1600	34	MEAT+	FR 20°/40° / 60°	FIX / DALI	WHITE
GALE M	RE	TRIDONIC	2500 / 2500 / 2500	34	FISH	FR 20°/40° / 60°	FIX / DALI	WHITE
GALE M	RE	TRIDONIC	2400 / 2400 / 2400	34	FRUIT	FR 20°/40° / 60°	FIX / DALI	WHITE

Luminous flux tolerance +/- 10%. The Company reserves the right to change any product specifications without prior notification.

Mounting	Recessed
Optical system	Facet reflector (FR) toolless exchangeable
Light distribution	Direct
Driver	TRIDONIC with thermal protection - FIX - DALI (dimnable 1-100%)
Materials	Housing: AL die cast Reflector: facet anodised AL
Surface finish	Housing: white (RAL 9003)
Weight	1.5 kg (M) 1.1 kg (S)
Service lifetime	50 000 hours / L80 B10 @ 35 °C (M) 50 000 hours / L70 B10 @ 35 °C (S)
Ambient temperature	0 °C / + 35 °C
EEC	A++ / A+ / A

STANDARD



GALE FOOD

Flawless vertical illumination with round footprints in food applications can be reached by Gale Food luminaire. The possibility to change the reflectors (20°/40°/60°) will allow you to see the products in natural light with stunning CRI and thus gain a competitive edge in their appearance.

order description: GALE M RE T 2400 FRUIT FR20 DA WH