



**Key Features**

- PIR sensor detects movement within detection range allowing load control in response to changes in room occupancy.
- IR Receiver receives control and programming commands from a IR (infrared) handset (available separately).
- Status LEDs flash red to indicate the following:

**Connections**

|                        |  |
|------------------------|--|
| External power / DALI: | Removable connector block;   |
| Wire size:             | 0.5 mm <sup>2</sup> - 1.5 mm <sup>2</sup> ; Solid or stranded              |
| Cable rating:          | All cables must be mains rated<br>Max. length: 300 m @ 1.5 mm <sup>2</sup> |

**Power**

|                    |                |
|--------------------|----------------|
| DALI supply input: | 13 V to 22.5 V |
| DALI consumption:  | 15 mA          |

**Sensors**

|                    |   |
|--------------------|---|
| Presence detector: | PIR: Passive infrared presence detector |
| Infrared receiver: | For remote control commands             |

**Remote control functions**

|  |   |
|--|---|
| Remote control handset:                | LMS CU HE DIM REMOTE CONTROL 3  |
| Use LMS CU HE DIM REMOTE CONTROL 3 to: | - recall lighting scenes 1-4<br>- adjust light levels<br>- store current level<br>- install preset levels for scenes 1-4,<br>Note: Adjust sensitivity using PC programming tool (and not by remote control unit). |

**Mechanical data**

|  |  |
|--|--|
| Mounting hole diameter:                                | 68 mm  |
| Bezel diameter:  | 76 mm  |
| Recommended clearance depth (incl. 50 mm for cabling): | 80 mm (without protective cover)<br>100 mm (with protective cover) |
| Material (casing):                                     | Flame retardant ABS  |
| Finish / Colour:                                       | Matt / White   |
| Weight:  | 58 g   |
| IP code:   | IP30   |

**Operating conditions**

|                      |                          |
|----------------------|--------------------------|
| Ambient temperature: | +10 °C to +35 °C         |
| Relative humidity:   | Max. 90 %, noncondensing |
| Storage temperature: | -10 °C to +70 °C         |

**Conformity and standards**

|               |  |
|---------------|--|
| EMC emission: | EN 61000-6-1                           |
| EMC immunity: | EN 61000-6-3                           |
| Safety:       | EN 60730-1                             |
| Environment:  | Complies with WEEE and RoHS directives |

**Version information**

|                   |        |
|-------------------|--------|
| Software version: | 6.08   |
| Hardware version: | Rev. 2 |

# LMS SE HE PIR DETECTOR

**CODE: 2500005SE006**

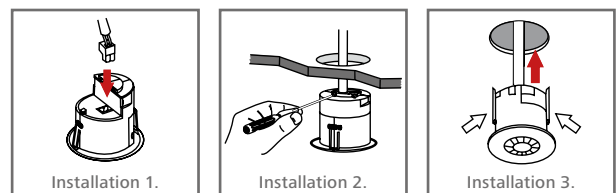
The LMS SE HE PIR DETECTOR is a compact, flush-mounted ceiling unit that provides energy-saving functions when used in a DALI system.

**The unit contains these sensors:**

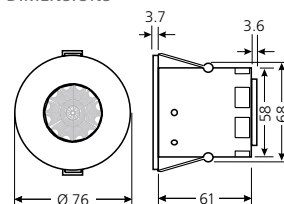
- Passive infrared detector (PIR)
  - Infrared receiver (for remote control handset).
- As a presence detector, the unit can turn lights on when a room is occupied and off when the room is empty. The unit is fully compatible with lighting system design and control software; PC programming tool.

**Installation Notes**

- Position the sensor so that the occupants of the room are normally inside the detection zone.
- Do not install the sensor within 1 m of any lighting, forced air heating, or ventilation equipment.
- Do not fix the sensor to an unstable or vibrating surface.
- Install the unit as far away as possible from the surface of metal objects.
- The detection pattern illustrated is based on a mounting height of 2.8 m.
- A lower mounting height will decrease the overall size of the detection zone.



**DIMENSIONS**



**DETECTION PATTERN**

