



**Key Features**

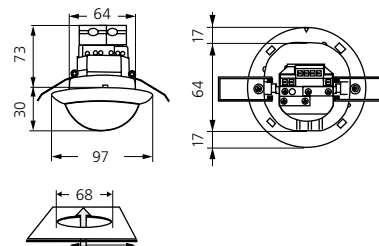
- Occupancy detector with extended detection area, daylight-dependent lighting control
- DALI/DSI interface for control of digital dimmable electronic ballasts as a group
- Can be switched between DALI and DSI modes with remote control and Dip switches.
- Installation as Master
- Detection area can be extended with Slave units
- Push button manual switching and dimming available
- Additional functions can be set via optional remote control

Mains supply	110-240 V AC , 50 / 60 Hz
PIR Coverage	360 °
Detection pattern	Ø 24 m across Ø 8 m towards Ø 6.4 m seated
IP code	SM= IP20 FC= IP20 / Class II
Ambient temperature	-25 °C to +50 °C
Resistance	Housing UV- and shock resistant polycarbonate
Remote accessory	LMS SE BG REMOTE CONTROL IR DALI LMS SE BG REMOTE CONTROL PD MINI LMS SE BG REMOTE CONTROL IR PD DALI
Switching contact	Channel 1 (control the lighting)
Output protocol:	DALI
Output power capability	max. 50 DALI/DSI EB's
Time setting	1- 30 min
Photo electric switch	10 - 2000 Lux

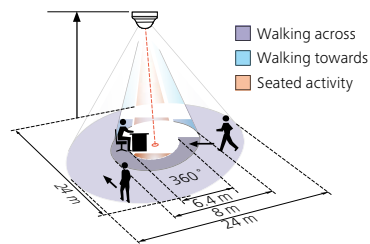
LMS SE BG 4 MO PIR DALI  
DSI SM

**CODE: 5501841SE004**

DIMENSIONS



DETECTION PATTERN



CONNECTION

